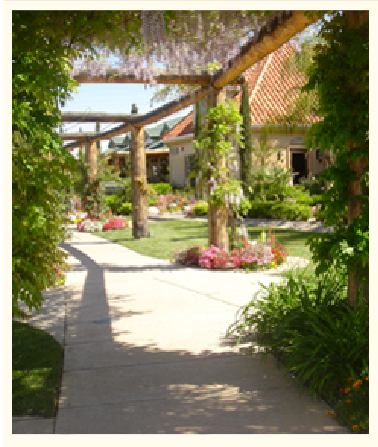




HLAA-SD Fund-Raising visit to South Coast Winery in Temecula Winery Tour and Tasting

Saturday May 7th 1 pm to 4pm

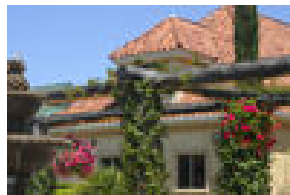
Limited to 25 people Reserve your spot today!
\$10 payable to HLAA-SD



South Coast Winery Resort & Spa
34843 Rancho California Road
Temecula

Take 1-15 north. Exit Rancho California Road in Temecula. Go right and travel east approx. 10 miles, through Temecula Wine Country. South Coast Winery Resort & Spa is located at the corner of Rancho California & Anza Roads. Allow 1 hour for travel each way if your starting point is north of highway 52; allow more time if your starting point is further south. Eat lunch before you come or bring a sack lunch/snack

Meet at the fountain outside of the tasting room



If you'd like to carpool meet at 4425 Bannock Ave at 11:30. We'll return to Bannock between 4:30 and 5pm

Questions? Bonnie beggert@AOL.com or Christy cstolzer@hotmail.com